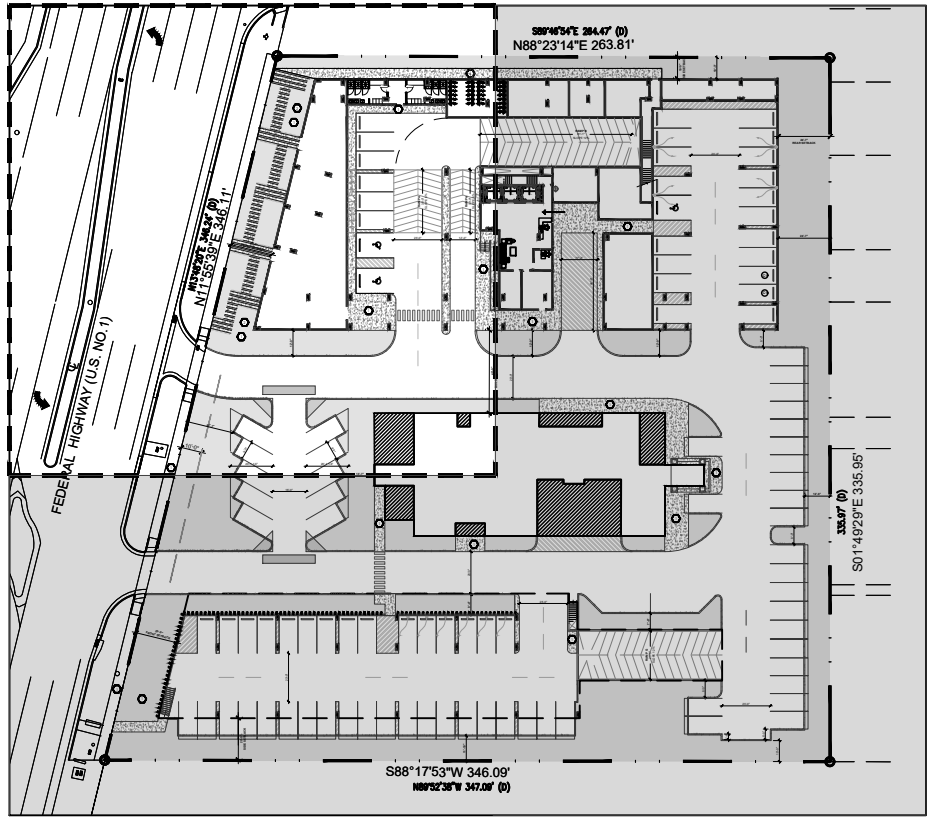


KEY:



HARDSCAPE SCHEDULE				
KEY	DESCRIPTION	MANUFACTURER	COLOR	FINISH
1	Concrete	Contractor	Grey	Standard
2	Concrete Paver	TBD	TBD	TBD

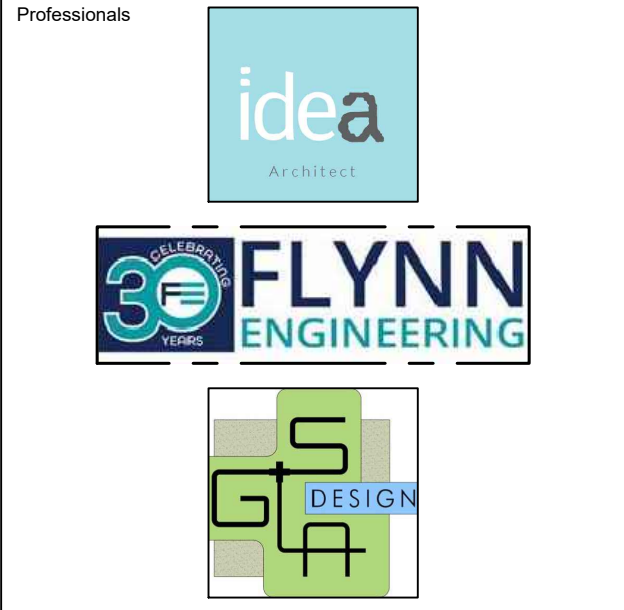
SILVA CELL



absolute-idea.com
CANAL PARK
3323 NE 163rd Street, Suite 200 North Miami Beach, FL 33160
305.792.0015 305.931.0279 info@absolute-idea.com

SEAL

KEN GARDNER
FLA 1569
TO THE BEST OF MY KNOWLEDGE, THE PLANS AND SPECIFICATIONS COMPLY WITH THE CITY OF MIAMI'S ORDINANCES AND THE FLORIDA PROFESSIONAL ENGINEERING ACT, AND I AM NOT PROVIDING ANY SERVICES THAT ARE NOT PERMITTED BY THE FLORIDA PROFESSIONAL ENGINEERING ACT.



REV.	DATE	DESCRIPTION
01	XX-XX-2024	D.R.C SUBMITAL

ALL MEASUREMENTS MUST BE VERIFIED BEFORE BEGINNING THE WORKS. NO MEASUREMENTS ARE TO BE SCALED DIRECTLY FROM THIS DRAWING.

Key section

Client
VERA FUND
NICK POLYUSHKIN
& YURI KHARITONENKOV
TEL: 305.833.3303

Project
**1600 S FEDERAL HIGHWAY
(MIXED-USE PROJECT)**
1600 SOUTH FEDERAL HIGHWAY,
POMPAHO BEACH, FL 33062

Title	
HARDSCAPE PLAN GROUND FLOOR	
Drawn GSLA	Field LANDSCAPE ARCH
Verified KG	Scale as shown
Approved KG	Date 10-09-2024
Project Manager KG	Dwg. no. L-101
Project 24-838	

PZ
PZ24-12000027
06/24/2026

